

Getting Started with Pervasive.SQL

SDK Edition



disclaimer

PERVASIVE SOFTWARE INC. LICENSES THE SOFTWARE AND DOCUMENTATION PRODUCT TO YOU OR YOUR COMPANY SOLELY ON AN "AS IS" BASIS AND SOLELY IN ACCORDANCE WITH THE TERMS AND CONDITIONS OF THE ACCOMPANYING LICENSE AGREEMENT. PERVASIVE SOFTWARE INC. MAKES NO OTHER WARRANTIES WHATSOEVER, EITHER EXPRESS OR IMPLIED, REGARDING THE SOFTWARE OR THE CONTENT OF THE DOCUMENTATION; PERVASIVE SOFTWARE INC. HEREBY EXPRESSLY STATES AND YOU OR YOUR COMPANY ACKNOWLEDGES THAT PERVASIVE SOFTWARE INC. DOES NOT MAKE ANY WARRANTIES, INCLUDING, FOR EXAMPLE, WITH RESPECT TO MERCHANTABILITY, TITLE, OR FITNESS FOR ANY PARTICULAR PURPOSE OR ARISING FROM COURSE OF DEALING OR USAGE OF TRADE, AMONG OTHERS.

trademarks

Btrieve and XQL are registered trademarks of Pervasive Software Inc.

Btrieve Pro, Built on Btrieve, Built on Scalable SQL, Client/Server in a Box, DDF Ease InstallScout, MicroKernel Database Engine, Pervasive.SQL, Pervasive.SQL 2000, Scalable SQL, Smart Naming, SmartScout, Smart Components, Smart Component Management, Navigational Client/Server, MicroKernel Database Architecture, and Xtrieve PLUS are trademarks of Pervasive Software Inc.

Microsoft, MS-DOS, Windows, Windows NT, Win32, Win32s, and Visual Basic are registered trademarks of Microsoft Corporation.

Windows 95 is a trademark of Microsoft Corporation.

NetWare and Novell are registered trademarks of Novell, Inc.

NetWare Loadable Module, NLM, Novell DOS, Transaction Tracking System, and TTS are trademarks of Novell, Inc.

All company and product names are the trademarks or registered trademarks of their respective companies.

© Copyright 1999 Pervasive Software Inc. All rights reserved. Reproduction, photocopying, or transmittal of this publication, or portions of this publication, is prohibited without the express prior written consent of the publisher, unless such reproduction, photocopying, or transmittal is part of a Derivative Software Product as defined in the licenses granted in conjunction with the purchase of this publication and associated software.

This product includes software developed by Powerdog Industries.

© 1994 Powerdog Industries. All rights reserved.

The ODBC Driver Manager for NetWare (ODBC.NLM) included in this product is based upon the GNU iODBC software Copyright (C) 1995 by Ke Jin <kejin@empress.com> and was modified by Simba Technologies Incorporated on June 1999.

This library is free software; you can redistribute it and/or modify it under the terms of the GNU Lesser General Public License as published by the Free Software Foundation; either version 2 of the License, or (at your option) any later version.

This library is distributed in the hope that it will be useful, but WITHOUT ANY WARRANTY; without even the implied warranty of MERCHANTABILITY or FITNESS FOR A PARTICULAR PURPOSE. See the GNU Lesser General Public License for more details.

A copy of the GNU Lesser General Public License is included in your installation of Pervasive.SQL 2000 at [IPVSWIDOC\LESSER.HTM](#). If you cannot find this license, write to the Free Software Foundation, Inc., 59 Temple Place, Suite 330, Boston, MA 02111-1307 USA. You may contact Pervasive Software, Inc. using the contact information on the back cover of this manual.

**Pervasive Software Inc.
12365 Riata Trace Parkway, Building II
Austin, Texas 78727 USA**

Getting Started with Pervasive.SQL

July 1999

100-003679-001

Contents

About This Manual	vii
Who Should Read This Manual.	vii
Manual Organization	viii
Conventions	ix
1 Welcome to Pervasive.SQL 2000 SDK	1-1
Components of Pervasive.SQL.	1-1
Documentation Included with Pervasive.SQL	1-3
How to Install the SDK	1-5
2 Installing the Pervasive.SQL 2000 SDK.	2-1
Preparing for Installation	2-1
Installing the Pervasive.SQL SDK	2-5
Common Questions After Installation.	2-11

Figures

2-1	Pervasive.SQL SDK Setup Welcome Screen	2-5
2-2	Choosing Setup Type for Pervasive.SQL SDK	2-7
2-3	Choosing Client Directory of Pervasive.SQL SDK	2-7
2-4	Choosing Your Start Menu Folder.	2-8
2-5	Ready to Start Copying Files	2-9
2-6	Successful Installation.	2-10

Tables

2-1	Pervasive.SQL SDK Setup - Installed Components	2-6
-----	--	-----

About This Manual

This manual contains information about installing the SDK (software development kit) for the Btrieve data management system and the SQL relational database system, together called Pervasive.SQL. Btrieve is a complete transactional database management system designed for high-performance data handling and improved programming productivity. SQL Relational Database Engine (SRDE) is a relational, embeddable, and scalable database system.

For information about configuring Pervasive.SQL engines, see *Pervasive.SQL User's Guide*.

Who Should Read This Manual

Read this manual if you are installing the Pervasive.SQL 2000 SDK.

Pervasive Software would appreciate your comments and suggestions about this manual. As a user of our documentation, you are in a unique position to provide ideas that can have a direct impact on future releases of this and other manuals. Please send comments to the address on this manual, or send email to docs@pervasive.com.

Manual Organization

Install Pervasive.SQL 2000 SDK by reading this manual. *Getting Started With Pervasive.SQL* is divided into the following sections:

- ◆ Chapter 1—“Welcome to Pervasive.SQL 2000 SDK”

This chapter describes the components and documentation that come with Pervasive.SQL SDK.

- ◆ Chapter 2—“Installing the Pervasive.SQL 2000 SDK”

This chapter describes installing the Pervasive.SQL SDK on a 32-bit Windows machine.

This manual also contains an index.

Conventions

Unless otherwise noted, command syntax, code, and code examples use the following conventions:

- Case Commands and reserved words typically appear in uppercase letters. Unless the manual states otherwise, you can enter these items using uppercase, lowercase, or both. For example, you can type MYPROG, myprog, or MYprog.
- [] Square brackets enclose optional information, as in [*log_name*]. If information is not enclosed in square brackets, it is required.
- | A vertical bar indicates a choice of information to enter, as in [*path* | *@path*].
- < > Angle brackets enclose multiple choices for a required item, as in /D=<5 | 6 | 7>.
- variable* Words appearing in italics are variables that you must replace with appropriate values, as in *path*.
- ... An ellipsis following information indicates you can repeat the information more than one time, as in [*parameter ...*].
- ::= The symbol ::= means one item is defined in terms of another. For example, a::=b means the item *a* is defined in terms of *b*.

Welcome to Pervasive.SQL 2000 SDK

Thank you for purchasing Pervasive.SQL 2000 SDK. We hope that you will enjoy using this fast and reliable database product.

This chapter contains the following topics:

- ◆ “Components of Pervasive.SQL” on page 1-1
- ◆ “Documentation Included with Pervasive.SQL” on page 1-3

Components of Pervasive.SQL

Pervasive.SQL consists of the following components:

Workgroup Engine

If you do not already have a Pervasive.SQL 2000 server or workstation engine installed, the SDK installation will set up a workgroup engine that you can use in your development efforts. The workgroup engine package contains the following:

- ◆ Btrieve engine (MKDE) 7.50
- ◆ SQL engine (SRDE) 7.50
- ◆ ODBC 7.50
- ◆ Utilities (loaded via the Pervasive Control Center) that help you troubleshoot configuration problems (SmartScout, InstallScout), enhance performance and set configuration options (Configuration), and create and maintain databases (SQL Data Manager, Maintenance, and Rebuild).
- ◆ Requesters that allow you to access databases on remote Pervasive.SQL servers.

Note

The Pervasive.SQL server engine is not included in the Workgroup edition of Pervasive.SQL.

Developer Resources

This package contains a wealth of developer information that will assist you in becoming productive in a short amount of time.

- ◆ Developer Resource Center, a collection of sample code snippets
- ◆ Programming documentation
- ◆ ADO and OLE DB support for Visual Studio 6.0 developers
- ◆ Pervasive Direct Access Components for Delphi and C++ Builder
- ◆ Distributed Tuning Interface for high-level control of the Pervasive.SQL engine
- ◆ ActiveX interface
- ◆ I*net Data Server (Windows NT only)
- ◆ Java Class Library
- ◆ JDBC support (requires Pervasive.SQL 2000 server engine)

Documentation Included with Pervasive.SQL

This manual, *Getting Started with Pervasive.SQL*, is provided in hardcopy. All manuals are provided in Windows Help format with the Pervasive.SQL 2000 product.

You can order additional hardcopy editions of any of the manuals through the Pervasive Software Sales Team, who can be reached via e-mail at salesupport@pervasive.com.

Workgroup Engine Manuals

The following documentation is common to the Btrieve and SQL interfaces.

- Pervasive Products and Services* provides an outline of how to work with Pervasive Software and describes the database and product architecture.
- Pervasive.SQL User's Guide* gives information on how to configure Btrieve and SQL using the Setup utility, and documents the Rebuild, Maintenance, Monitor, and Function Executor utilities.
- SQL Language Reference* documents the SQL language and the open database connectivity feature, which is the interface to the SQL engine (SRDE).
- Status Codes and Messages* documents all the possible status codes and numbered messages that can be received when using Pervasive software.
- Getting Started with Pervasive.SQL (Workstation/Workgroup edition)* documents how to install and configure the Workstation and Workgroup engines for Pervasive.SQL.

Developer Manuals

The following manuals are specific to developers and are only included in the SDK:

- This book, *Getting Started with Pervasive.SQL (SDK edition)* helps you to install the SDK to your machine.
- Pervasive.SQL 2000 Migration Guide* documents how to convert your Scalable SQL applications to use Pervasive.SQL 2000.
- Pervasive.SQL Programmer's Guide*, helps you understand conceptual information about Pervasive programming and database design. There is an HTML subset of this guide that documents only the Java Interface.
- Pervasive.SQL API Programmer's Reference* provides information on programming with Pervasive APIs.
- Pervasive.SQL Visual Programmer's Reference* is a complete reference to the Pervasive ActiveX interface, Pervasive Direct Access Components for Delphi and C++ Builder, ADO and OLE DB.
- Getting Started with I*net Data Server* documents the I*net Data Server, which enables your Pervasive application to scale from client-server to the Internet and intranets.
- Tutorials and Guide to Samples* provides more sample code and procedures for new Pervasive developers.

In addition, all Pervasive products share the following:

- Online Glossary*

How to Install the SDK

You can install the SDK to either a machine already containing a Pervasive.SQL 2000 server, workstation, or workgroup engine, or on a machine containing no Pervasive.SQL 2000 engine. If the install detects that no Pervasive.SQL 2000 engine exists, you are required to install a Workgroup engine to your machine at the start of the SDK installation.

2 Installing the Pervasive.SQL 2000 SDK

This chapter contains procedures on successfully installing and running Pervasive.SQL SDK. The chapter contains the following sections:

- ◆ “Preparing for Installation” on page 2-1
- ◆ “Installing the Pervasive.SQL SDK” on page 2-5
- ◆ “Common Questions After Installation” on page 2-11

Preparing for Installation

This section contains information with which you need to be familiar in order to successfully install Pervasive.SQL SDK.

Before installing Pervasive.SQL SDK, review this section for any information relevant to your operation. You should also read the README.HTM (installed with either the Workstation/Workgroup or Server engine) and READSDK.HTM files on the distribution media.

System Requirements

You must have the following to install Pervasive.SQL SDK:

Workstation

- You must have a Pervasive.SQL 2000 server, workstation, or workgroup engine installed. If you run the SDK install without such an engine, a workgroup engine will be installed first before your SDK install continues.
- The Pervasive.SQL 2000 SDK Install is a 32-bit only install that only operates under Windows 9X or Windows NT 4. 0.
- At least 16 MB of free memory (32 MB is recommended).
- At least 3 MB of free disk space for the components in C:\WINDOWS\SYSTEM.
- Up to an additional 23 MB for the components installed to the target directory (for example, C:\PVSW)
- If a Pervasive engine is not already installed, you must have enough space for that component as well.
- To use the JDBC API, you must have a Pervasive.SQL 2000 server engine installed.
- To view the HTML Java documentation, you must have Netscape Navigator 3.x or higher, or Microsoft Internet Explorer 4.x or higher. Earlier versions of Microsoft Internet Explorer are incompatible with the JavaScript used in the documentation.

Platform Notes for Windows Environments

Observe the following rules when installing on this platform:

- ◆ Do not run the installation program from Windows Explorer or Network Neighborhood.
- ◆ If you run with Advanced Power Management, disable it while installing Pervasive.SQL SDK.

The power management can cause a Pervasive.SQL SDK installation to fail if the machine is suspended during the install. In Windows NT, you control the advanced power management via the Power icon on the Control Panel.

Installing Over Existing Pervasive Products

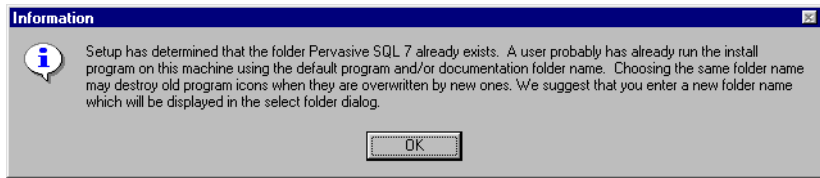
- ◆ The Pervasive.SQL 2000 SDK is designed to be installed in conjunction with either a Pervasive.SQL server or workstation engine. The SDK installation checks to see if you already have an engine installed (either server or workstation). If Setup detects an existing installation, no engine will be installed. If you do not have an engine installed, a workgroup engine will be installed during the SDK installation.
- ◆ If you install Pervasive.SQL SDK over an existing Btrieve 6.15 or 6.30 Workstation installation, the older Btrieve components will no longer be used. All features and functions from the v6.15 engine, except for MEFS (multi-engine file sharing), are supported in the Pervasive.SQL 2000 Workstation engine.
- ◆ If you have the beta version of Pervasive.SQL 2000 SDK installed on your system, you should remove it using the Control Panel before installing the production version of the product.

Installation Tips

- ◆ If the installation program detects that a long pause occurs in the installation, a status screen displays that asks if you wish to continue waiting or if you think the installation stopped responding.

If this occurs, you might need to switch tasks to bring the main installation window back into focus in the foreground. Use the Alt-Tab key combination to rotate among your running tasks.

- ◆ If you run multiple installations from the same server, specify different folder names for the Start Menu items so that Install can preserve your ability to uninstall each separate installation. Install displays the following dialog if you try to use the same folder name twice.



Installing the Pervasive.SQL SDK

Follow this procedure to install the Pervasive.SQL SDK at your workstation.

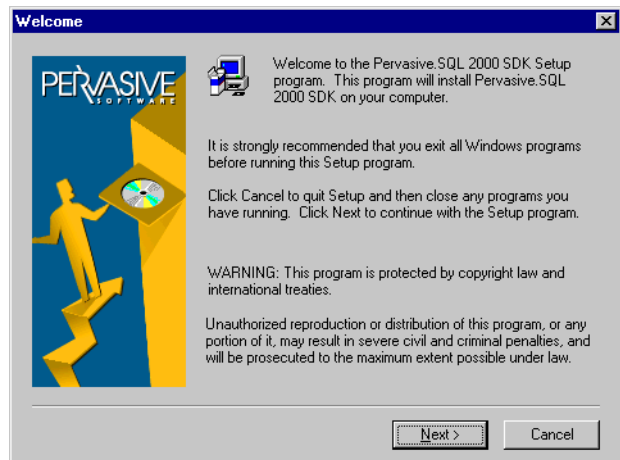
► To install the Pervasive.SQL SDK on Windows 9X or NT:

1. Launch the installation program from your Windows machine.

- a. Insert the Pervasive.SQL SDK CD in the CD-ROM drive of your Windows machine.
- b. If the installation does not start automatically, click **Start**, select **Run**, and type `drive:setup` where drive is the drive letter of your CD-ROM device.

If you have no Pervasive.SQL 2000 engine on your computer, the workgroup engine install launches at this point. That installation is documented in the *Getting Started with Pervasive.SQL (Workstation/Workgroup edition)*. Otherwise, the following dialog box displays.

Figure 2-1 Pervasive.SQL SDK Setup Welcome Screen



Click **Next** to proceed with the installation.

Table 2-1 shows what components are included in the installation.

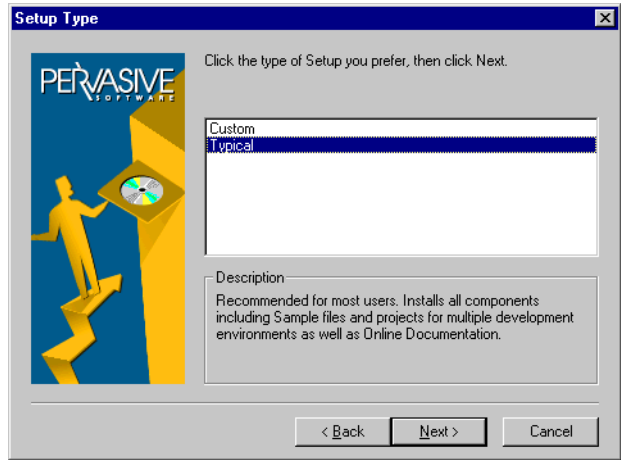
Table 2-1 Pervasive.SQL SDK Setup - Installed Components

Component	No engine on your system before installing SDK	Server or Workgroup engine already present
OLE DB/ADO support	✓	✓
ActiveX Interface	✓	✓
Java Class Library	✓	✓
JDBC Driver (requires server engine)	✓	✓
Developer's Resource Center	✓	✓
I*net Data Server	Windows NT only	Windows NT only
Sample Applications	✓	✓
Documentation	✓	✓
Online Course in Pervasive.SQL Development	✓	✓
Programming Interfaces	✓	✓
Btrieve Workgroup Engine	✓	✗
SQL Workgroup Engine	✓	✗
Utilities	✓	✗
Windows Requesters (Btrieve and SQL)	✓	✗
ODBC Client (Win32)	✓	✗
DOS Clients (Btrieve and SQL)	✓	✗

2. Choose your setup type.

Pick whether you want the typical (recommended) or custom install. The custom install lets you individually select components to install.

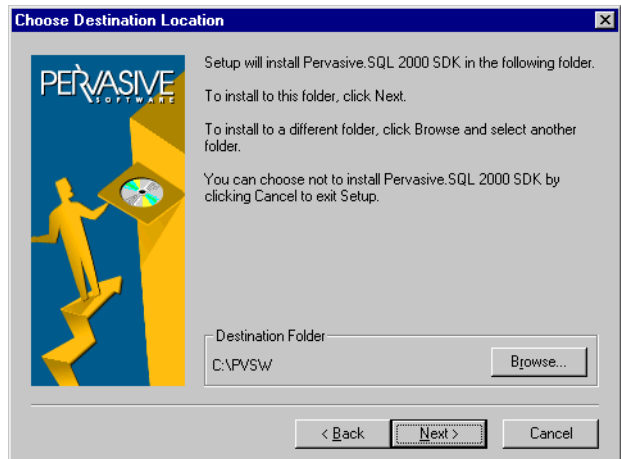
Figure 2-2 **Choosing Setup Type for Pervasive.SQL SDK**



3. Pick your SDK installation directory.

The components and documentation are written by default to C:\PVSW\SDK2000. You can specify a different location for the SDK software during the installation as shown in the following window.

Figure 2-3 **Choosing Client Directory of Pervasive.SQL SDK**



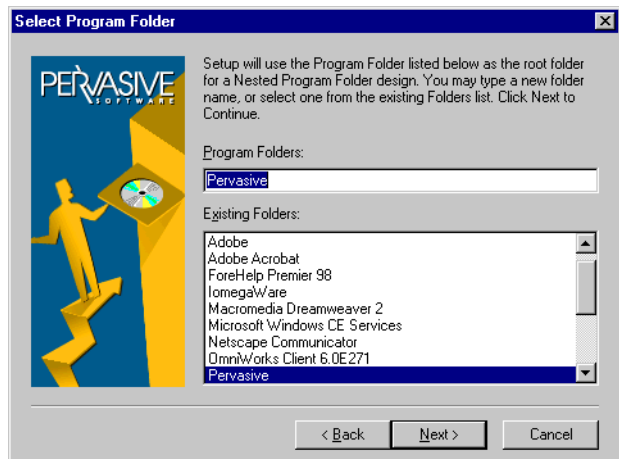
The files by default are placed in the C:\PVSW\SDK2000 directory. If you wish to change this, click **Browse** under Destination folder and select the correct directory. Click **Next** to continue.

4. Choose the folder in which to place menu items.

You specify the folder in which the Start Menu items will be placed. Pervasive Install suggests a name for the folder, which you can accept by clicking **Next**.

If you have previously done an install from this workstation, Install recommends that you do not use the same folder name so that your ability to cleanly uninstall the software in the future is preserved. Click **Next** to continue.

Figure 2-4 Choosing Your Start Menu Folder

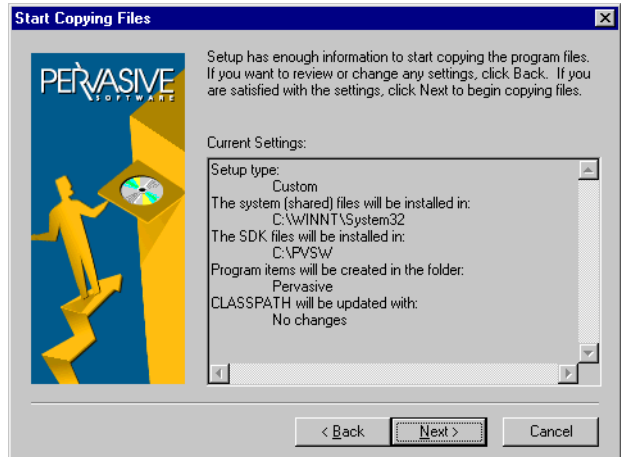


5. Verify your selections.

A dialog displays that lists the options you selected. If you want to change any of your selections, click **Back**.

If the displayed selections are correct, click **Next** to continue.

Figure 2-5 Ready to Start Copying Files



6. Wait while Setup finishes installing files.

Please wait while the Pervasive.SQL SDK installation copies files to your machine.

7. Your Pervasive.SQL SDK installation is complete. Congratulations!

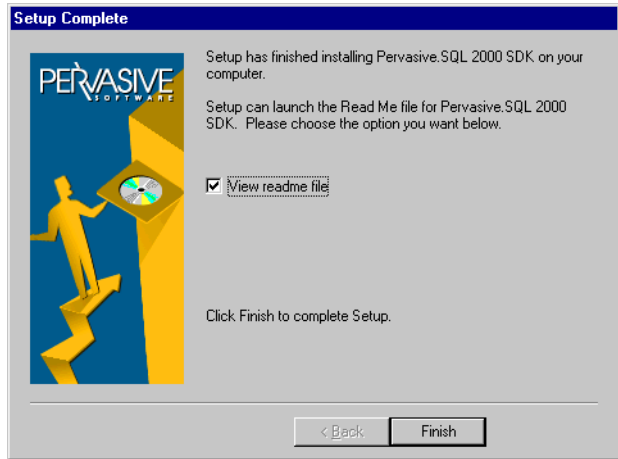
When the installation is finished, you choose whether to view the README file. Read this file for any important product information it may contain

Windows 9X only: You should now restart your computer to finish registering the updates to your system. After your computer restarts, you are ready to run the Pervasive database engine.

Note

The install program modifies the PATH, PERVASIVE_PATH, and CLASSPATH environment variables at the end of the installation process. These settings control how your Windows operating system finds Pervasive components. These environment variables are stored in the **Control Panel** under the Environment tab of the System icon (Windows NT) or in the AUTOEXEC.BAT file (Windows 9X).

Figure 2-6 Successful Installation



Continue reading this manual for other new-user information on Pervasive.SQL SDK. See “Common Questions After Installation” on page 2-11

Common Questions After Installation

This section contains information that you should read after running the installation program.

Where Can I Find Help for the Pervasive.SQL 2000 Migration Process

- ◆ The *Pervasive.SQL 2000 Migration Guide* - mguide.hlp - includes a wealth of information regarding the Scalable SQL API, ODBC, data types, and SQL syntax that has changed since the previous release.
- ◆ The *API Programmer's Reference* - prog_api.hlp - documents the new Distributed Tuning Interface and contains an updated Data Types chapter.
- ◆ The *Visual Programmer's Reference* - prog_ocx.hlp - documents the new OLE DB provider and the Pervasive Direct Access Components for Delphi and C++ Builder.
- ◆ The *Programmer's Guide* - prog_gde.hlp - contains new conceptual information for programmers.

You can also get help from the Pervasive Developer Zone at <http://www.pervasive.com/developerzone>.

How Do I Convert My Files From Previous Pervasive Products?

- ◆ *Users of Previous Btrieve Versions*: Use the Rebuild utility to convert your existing pre-v6.0 or v6.x files to v6.x or v7.x format. For more information, refer to *User's Guide*.

How Do I Read the Online Documentation?

Pervasive provides documentation in the Windows Help format. Therefore, you do not need any additional tools in order to view the content. To read a manual, load the documentation for Pervasive.SQL SDK from the Start Menu under the **Pervasive | Pervasive.SQL 2000 SDK | Documentation** group. You can then select a book from the help window.

When using the **Index** tab in the documentation, the items within represent the combined indexes of all the manuals. This is an easy way to search across the manuals for a specific topic.

How Do I Run DOS Programs with the Workstation Engine?

DOS programs are supported in the Workstation engine with the use of technology from Artefact. To run a DOS program on Windows 9X, run the item BTRBOX95 located in the Start Menu. Then run your DOS program. You can run multiple DOS applications in multiple windows after loading BTRBOX95 once. You do not need to run BTRBOX95 for Windows NT. Please see README.TXT for detailed information.

Windows virtual device driver DOS box support for Btrieve software was developed by Artefact Network Support and Pervasive Software Distribution and Competence Center in the Netherlands, pursuant to an assignment from Pervasive Software Inc.

What Files Were Installed As Part of Pervasive.SQL SDK?

Once installed, the Pervasive.SQL SDK system files reside in the following directory structure.

\PVSW

\BIN	Btrieve and SQL files (engine and requesters), Pervasive.SQL SDK configuration tools and utilities
\CLIENTS	Installs for requesters
\DEMODATA	Pervasive University Demonstration Database
\DOC	User documentation in Windows Help format (Engine)
\SAMPLES	SAMPLE.BTR database
\SDK2000	Contains ActiveX interface, Java Class Library, sample video store application, I*net Data Server (Windows NT only), and Online Course.
\DOC	SDK Documentation (except for HTML Java docs)
\DRC	Developer Resource Center
\INTF	Programming Interfaces, including the Distributed Tuning Interface
\JAVAAPI	Java Class Library and HTML Java documentation
\OLEDB	OLE DB/ADO support
\PDAC	Pervasive Data Access Components for Delphi and C++ Builder
\SAMPLES	Sample code
\TRAINING	On-line Training Course in HTML

Where Do I Go From Here?

Continue with your Pervasive.SQL SDK installation by learning how to start and stop the Pervasive engines as described in the Workstation/Workgroup edition of *Getting Started*.

Note

If you are using the client/server engine, see *Getting Started with Pervasive.SQL (Server edition)*

Index

A

Artefact 2-12
AUTOEXEC.BAT 2-9

B

BTRBOX95 2-12

C

CLASSPATH environment variable 2-9
Common questions after installation 2-11
Components
 of Pervasive.SQL 1-1
Conversion
 of previous files 2-11
 utility 2-11

D

Databases
 installing 2-5
Developer resources 1-2
Documentation 2-12
 summary of 1-3
DOS box support 2-12

E

Environment notes 2-2
environment variables 2-9

F

Files
 converting to new format 2-11
Files installed 2-13
Frequently-asked questions 2-11

H

Help for upgrading 2-11

I

Installation

 over previous products 2-3
Installing
 files installed 2-13
 Pervasive.SQL 2-5
Installing Pervasive.SQL 2-1

M

Migrating from previous versions 2-11

O

Old products, installing over 2-3
Online documentation 2-12

P

PATH environment variable 2-9
Pervasive.SQL
 components 1-1
 documentation 1-3
 Win32 installation 2-1
PERVASIVE_PATH environment variable 2-9
Post-installation information 2-11
Prerequisites for Win32 installation 2-2
Previous products, installing over 2-3
Previous versions of Pervasive.SQL, migrating from 2-11

R

README.TXT for installation 2-9
Rebuild utility 2-11
Requesters, DOS 2-12
Requirements, system 2-2
Resources for developers 1-2
running DOS programs 2-12

S

Server system requirements 2-2
System requirements 2-2
System requirementsr 2-2

U

Updating files to new format 2-11

Upgrade procedure 2-11

Utilities

 Conversion 2-11

 Rebuild 2-11

W

Windows platform information 2-2